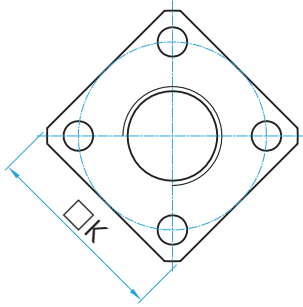
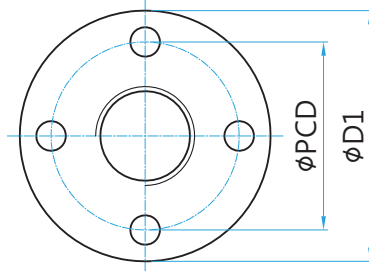


# TTM, FTM

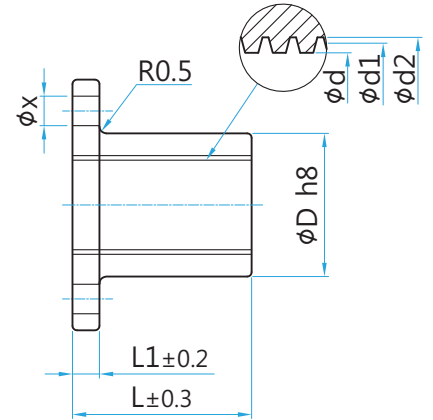
너트 재질 : BC6 (청동주물)



FTM



TTM



(unit : mm)

축경 (φD)	형번	리드	φD	φD1	L	L1	K	PCD	φx	내경 φd	유효경 φd1	곡경 φd2	Fo (kgf)	중량 (kg)	
8	TTM8	R,L	1.5	15	30	20	4	-	22	3.3	7	7.25	8.5	150	0.4
10	TTM10	R	2	20	36	24	5	-	26	4.3	8.5	9	10.5	260	0.8
	FTM10	L						26							0.7
12	TTM12	R	2	22	44	30	5	-	31	5.4	10.5	11	12.5	400	0.1
	FTM12	L						31							0.1
14	TTM14	R	3	22	44	30	5	-	31	5.4	11.5	12.5	14.5	500	0.1
	FTM14	L						31							0.1
16	TTM16	R	3	28	51	35	6	-	38	6.6	13.5	14.5	16.5	640	0.2
	FTM16	L						38							0.2
18	TTM18	R	4	32	56	40	6	-	42	6.6	14.5	16	18.5	890	0.3
	FTM18	L						42							0.2
20	TTM20	R	4	32	56	40	6	-	42	6.6	16.5	18	20.5	1000	0.3
	FTM20	L						42							0.2
22	TTM22	R	5	36	61	50	7	-	47	6.6	18	19.5	22.5	1260	0.4
	FTM22	L						47							0.4
25	TTM25	R	5	36	61	50	7	-	47	6.6	21	22.5	25.5	1440	0.4
	FTM25	L						47							0.3
28	TTM28	R	5	44	76	56	8	-	58	9	24	25.5	28.5	1800	0.7
	FTM28	L						58							0.6
32	TTM32	R	6	44	76	56	8	-	58	9	27	29	32.5	2090	0.6
	FTM32	L						58							0.5
36	TTM36	R	6	52	84	60	8	-	66	9	31	33	36.5	2630	0.9
	FTM36	L						66							0.8
40	TTM40	R	6	58	98	70	10	-	76	11	35	37	40.5	3240	1.3
	FTM40	L						76							1.2
45	TTM45	R	8	64	104	75	10	-	80	11	38	41	45.5	4110	1.6
	FTM45	L						80							1.5
50	TTM50	R	8	68	109	80	10	-	85	11	43	46	50.5	5110	1.8
	FTM50	L						85							1.6

Fo : 동적허용추력 (kgf)